

INSTRUKCJA MONTAŻU
FITTING INSTRUCTION
ANBAUANLEITUNG
INSTRUCTIONS DE POSE
INSTRUCCIONES SE MONTAJE

Mazda MX5 ND ELECTRIC VALVE EXHAUST SYSTEM

d116-318Z/91
E24 59 R -A02 0013*00

Caution: set is to be fitted with the ulter custom rear bumper diffuser



+



1. Should the exhaust be hot wait until it cools down before proceeding.
2. Remove the factory fitted exhaust



3. The middle pipe need to be shortened – cut off 25cm measured from the flanche (see the photo)



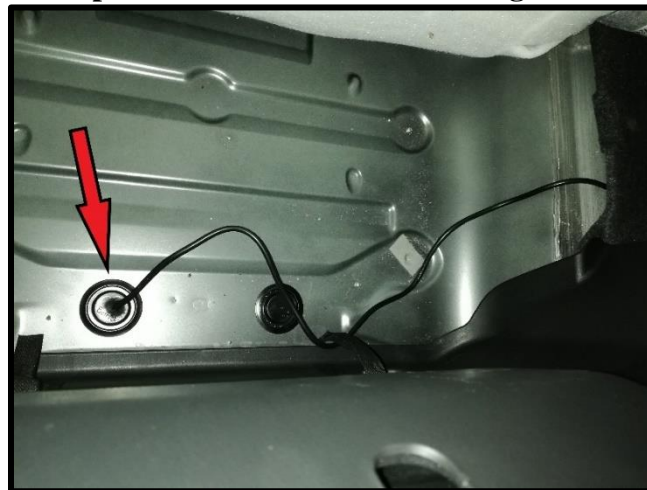
4. Remove the upholstery from the trunk (held by plastic bolts).



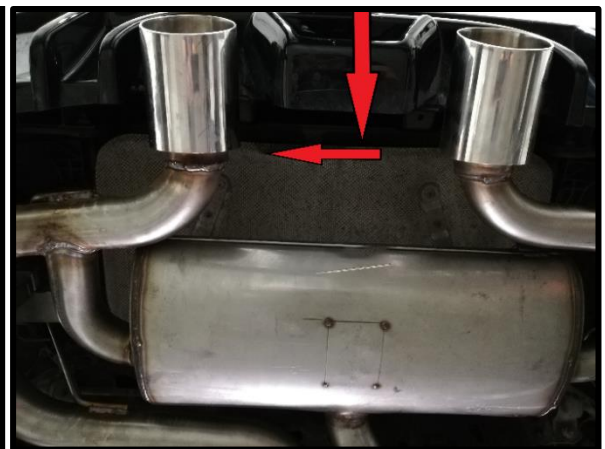
5. Place the central unit in the trunk (boot) of the car



6. Find the service hole and put the central unit wire through it outside



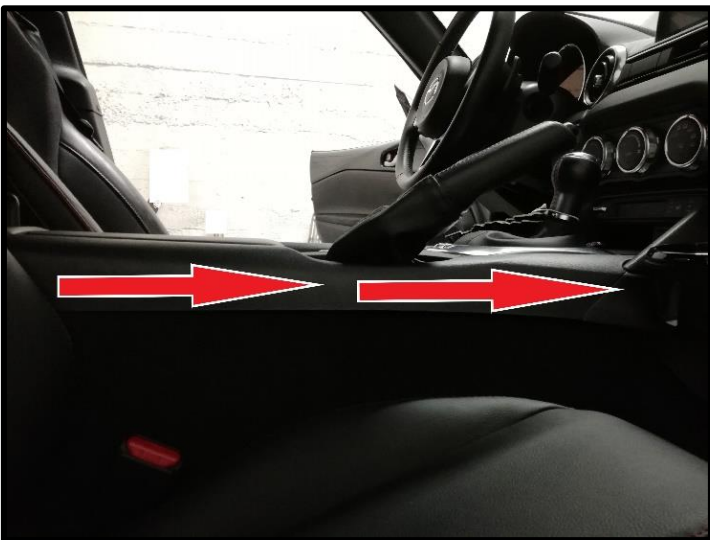
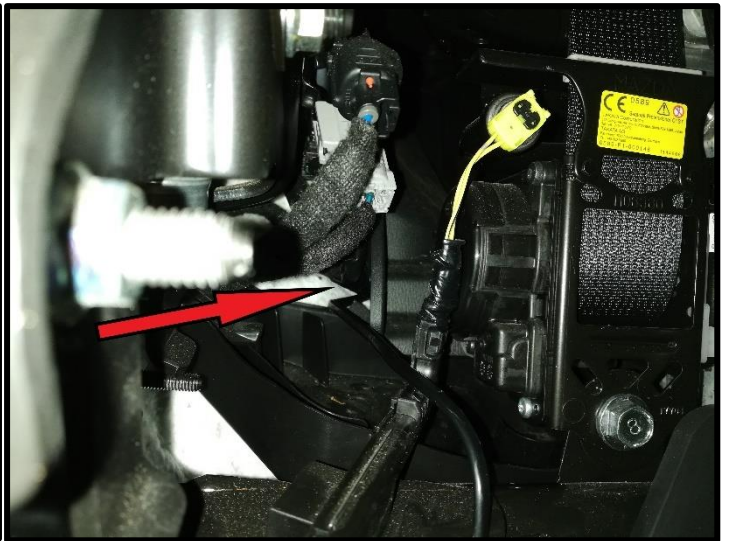
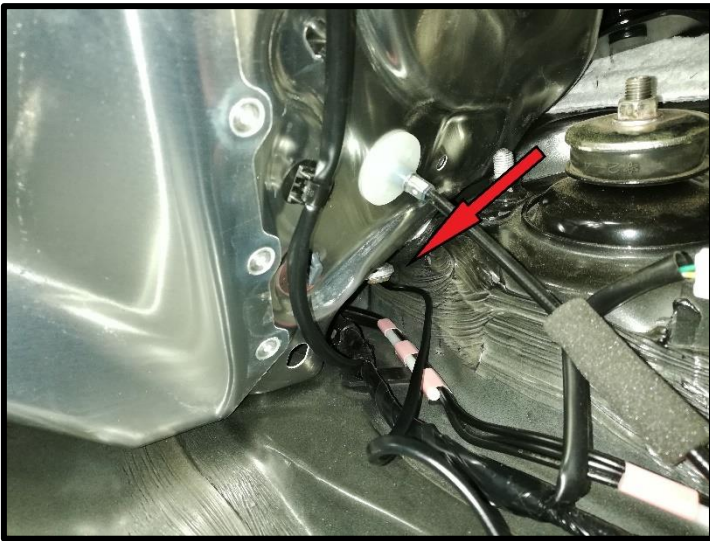
7. Get the wire out for approx. 60cm. Hide the wire behind the heat shield.



8. . Remove the plastic cover located behind the passenger seat.



9. Get the central unit power cable from the back of the passenger seat through the middle section up to the 12V cigarette socket.



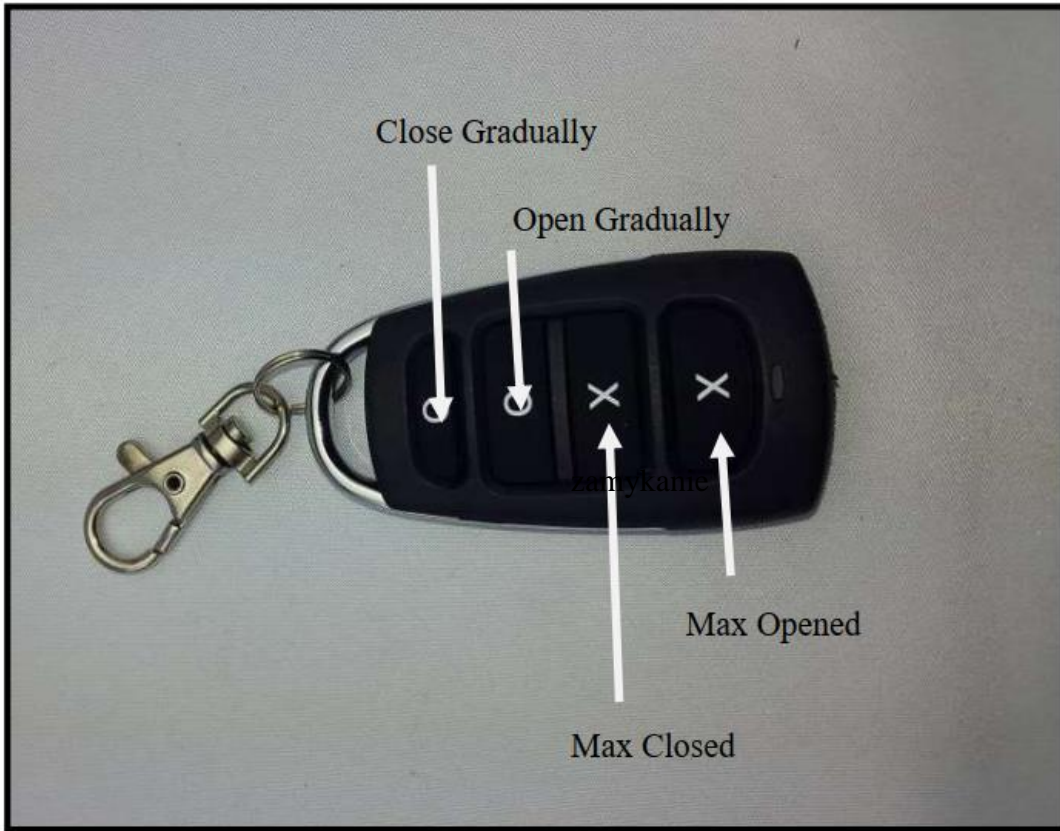
10. Before proceeding with exhaust assembly – mount the rear diffuser on. Place the Ulter exhaust brackets on the rubber hangers. Align the exhaust tailpipes so that they are evenly place in the bumper diffuser cut outs. Once aligned tighten the connection using the provided clamp.



11. Connect the central unit wire with the exhaust valve.



12. Check that the valve reacts on pressing the remote control buttons.



RC buttons explained (from the bottom)

X – MAX Opened

X – MAX Closed

O – Open gradually

O – Close gradually

13. Secure the central unit in the trunk and reassemble the upholstery.

